

**ENGINEERING DEPARTMENT**  
693A Spanish Town Road, Kingston 11  
Tel. 937-9320-8, Fax 937-9259

**T & D MATERIAL PURCHASING SPECIFICATION**

|  |                                  |
|--|----------------------------------|
| <b>JPS Specification #:</b> ALB-Bracket-001-2012 | <b>DATE:</b> April 19, 2012      |
| <b>ITEM STOCK:</b> 04127                         | <b>SUPERSEDES:</b> June 28, 2004 |

**DESCRIPTION:** Bracket, Luminaire, All Aluminum, 1219mm and 1829mm (4' and 6')

**APPLICATION:** For mounting of Luminaire on both concrete and wood poles for street lighting purpose

**SPECIFICATION**

---

**Bracket, Luminaire, All Aluminum, 1219mm and 1829mm (4' and 6') for mounting of Luminaire on both concrete and wood poles for street lighting purpose.**

The luminaire mounting bracket shall be capable of supporting luminaries weighing up to 29kg (65lbs) on poles ranging in types from wood to concrete and metal. The bracket shall be fabricated from aluminum components, and shall be capable of being mounted on poles with 254mm (10") hole spacing using 16 mm (5/8") diameter bolts. Provision shall also be made on the bracket to accommodate 32mm (1 1/4") pole bands. The bracket shall have affixed to it a copper plated ground wire clamp for grounding.

**Material**

The all aluminum bracket shall be fabricated from 2" SCH. 40 pipe alloy 6063-T6. It shall have a rise of 762mm (30") and be capable of supporting luminaries weighing up to 29kg (65lbs) with an effected projected area of 0.186 square meters (2 square feet).

The aluminum backing bracket of dimension 76mm x 356mm x 38mm (3" x 14" x 1 1/2") shall be affixed to the bracket at position illustrated on attached drawing LBS0053 by means of aluminum supporting plates cleanly welded to both structures as illustrated on the attached drawing. The weld shall be such that it provides a **minimum** safety factor of 2.5. The luminaire bracket shall have dimensions as illustrated by the attached drawing LBS0053.

**Tests**

The luminaire bracket shall be subjected to tests and stipulated results as per AA 6063-T6. Certified tests reports shall be made available to the purchaser upon tender. The report shall contain the loading that causes failure of the bracket and the point of failure.

**Drawings**

Manufacturer's drawing shall be furnished at the time of tendering, and shall indicate the outline of the luminaire bracket, together with all pertinent mechanical characteristics, and dimensions as specified herein.

**All suppliers shall complete the attached (F0053), which shall form part of the evaluation process.**

|   |   |
|---|---|
| <b>Revised by:</b><br><i>K Rattray 19/4/2012</i>                                | <b>Approved by:</b><br><i>L Blackwood April 19, 2012</i>          |
| <b>Karl Rattray, P.E.,<br/>Distribution Engineer<br/>Engineering Department</b> | <b>Lloyd Blackwood, P.E.,<br/>Manager, Engineering Department</b> |

# ENGINEERING DEPARTMENT

693A Spanish Town Road, Kingston 11

Tel. 937-9320-8, Fax 937-9259

## MATERIAL DATA FORM

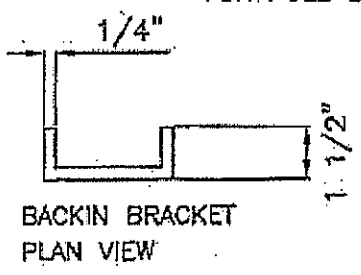
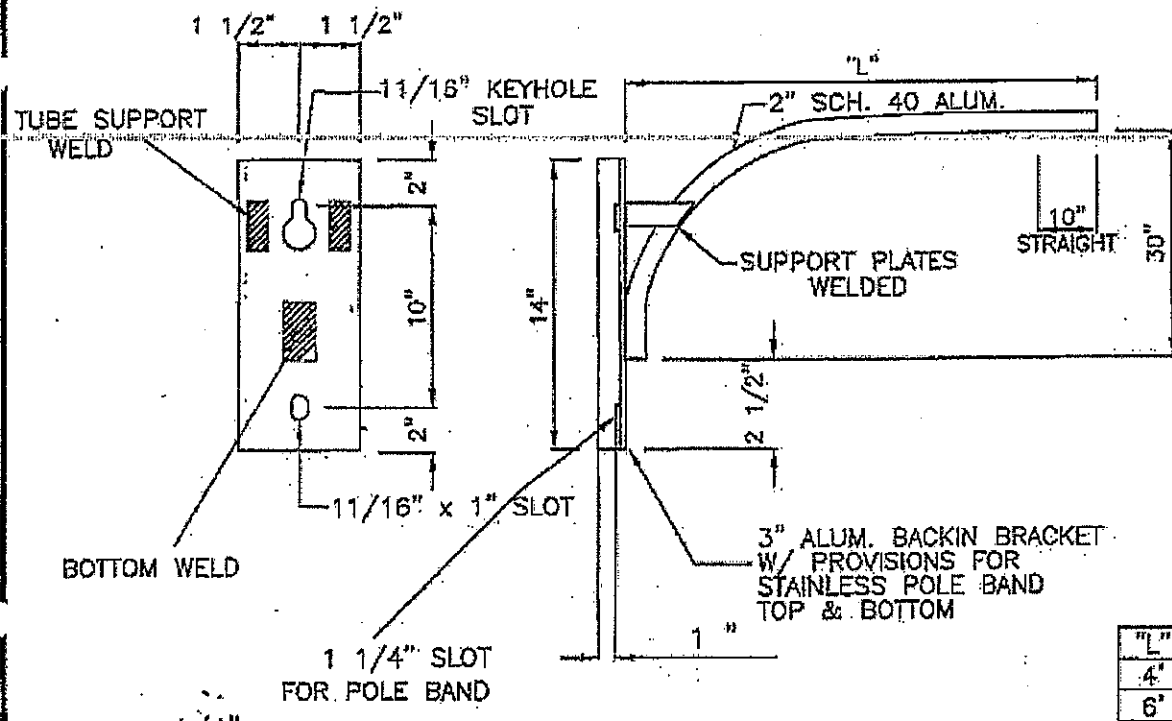
### LUMINAIRE BRACKET (F0053)

|  |                                  |
|--|----------------------------------|
| <b>JPS Specification #:</b> ALB-Bracket-001-2012 | <b>DATE:</b> April 19, 2012      |
| <b>ITEM STOCK:</b> 04127                         | <b>SUPERSEDES:</b> June 28, 2004 |

|  |  |
|--|--|
| Manufacturer                             |  |
| Catalogue Number                         |  |
| Manufacturing Standards                  |  |
| Alloy Type                               |  |
| Maximum Loading                          |  |
| Vertical rise from base of bracket       |  |
| Drawings Attached indicating dimensions? |  |
| Diameter of alloy pipe                   |  |
| Length of alloy pipe                     |  |
| Cross section thickness                  |  |
| Type of weld                             |  |
| Backing bracket section thickness        |  |
| Weight of complete assembly              |  |
| Test results attached?                   |  |

# JAMAICA PUBLIC SERVICE COMPANY LIMITED

## STREETLIGHT BRACKET



| TECHNICAL STANDARDS DEPARTMENT |      |       |              |
|--------------------------------|------|-------|--------------|
| DISTRIBUTION STANDARDS         |      |       |              |
| DRAWN                          | CHKD | APPRV | DATE         |
|                                |      |       | JUNE 2004    |
|                                |      |       | DRG# LBS0053 |
|                                |      |       | SCALE: NTS   |

